



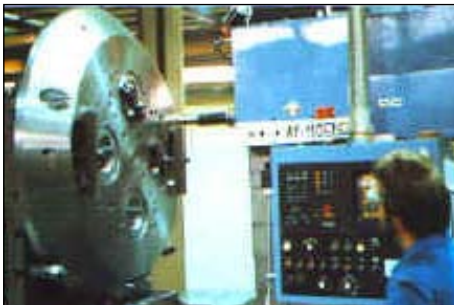
A member of the **BUTTING** Group

Mécanique de Précision
pour Equipements



Technologies

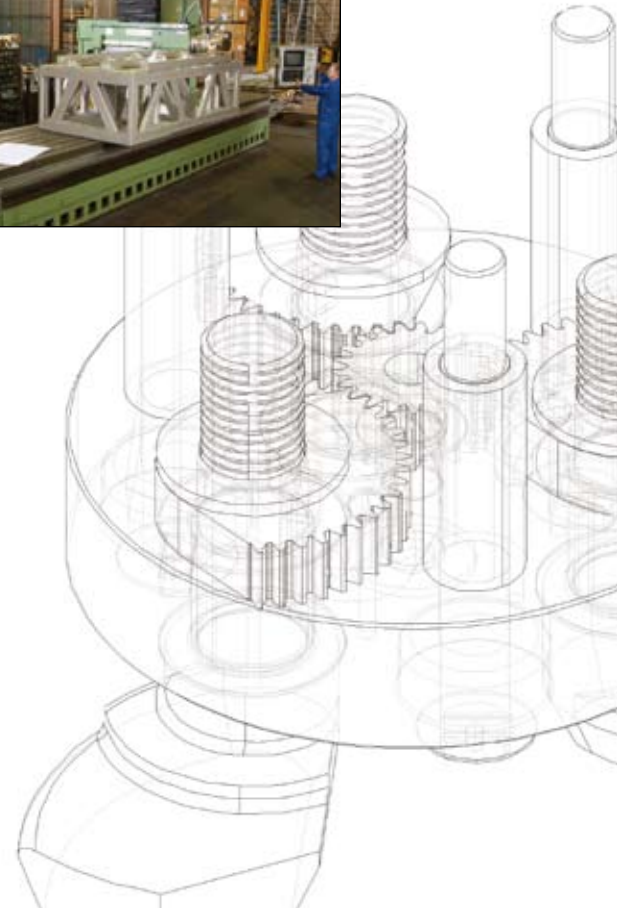
Since its foundation in 1958 and thanks to experience acquired in high technology sectors (nuclear power, defence, aeronautics and industry), MPE has developed a reputation in the machining of mechanical parts in small, medium or mass production as well as in the design and manufacture of prototypes or full equipment.



Fleet of recent machines including some with significant capacities.

Stainless steels or other exotic steels hold an important position in our machining and welding activities.

Interpretation and translation of the plans into CNC language are performed by the GibbsCAM CAD/CAM program (methods dept.).



ASSEMBLY AT THE FACTORY AND ONSITE SET-UP

Hall B: 700m²
Travelling cranes: 1 x 3t + 2 x 5t

AERONAUTICS



Total solutions

As a reliable partner for the realisation of your equipment, MPE supplies full solutions: design, manufacturing, factory assembly, approval of the equipment, management of specialist subcontracting and onsite set-up.



The clean room (compliant with standard ISO 14644 class 7) is a room with controlled atmosphere and dust levels, with slight excess pressure compared with the exterior, which enables us to carry out assemblies subject to high levels of cleanliness.

MECHANICAL WELDING

Hall C: 1.300m²
Travelling cranes: 2 x 8t + 2 x 5t

RONAUTICS – INDUSTRY – NUCLEAR – DEFENCE – AERONAUTICS – INDUSTRY – NUCLEAR



Capacities

In order to guarantee its independence and quality in terms of manufacturing equipment, MPE has integrated welding and sheet-metal working halls, equipped with shears, folding presses, bending machine, turning table and all appropriate welding tools (TIG – MIG – electrodes).

The welders are periodically ASME, EN, TÜV, etc. approved.



SURFACE TREATMENT

premises: 3 x 36m²

Specific facilities

In addition to sandblasting and painting premises, MPE has acid baths which allow pickling and passivation of components manufactured from stainless steel.





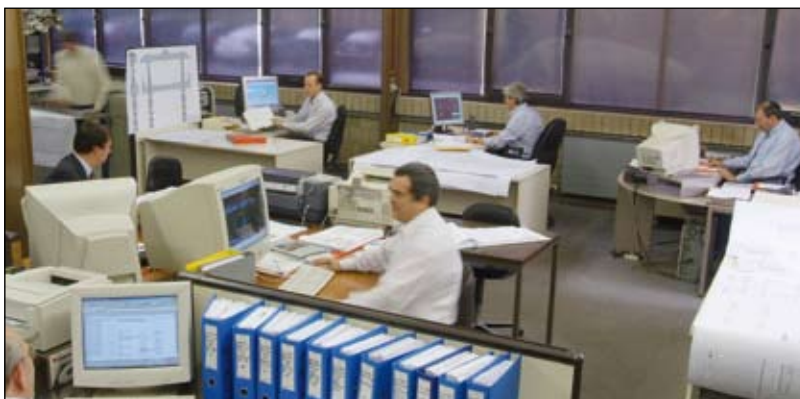
Quality Assurance

All processes are managed in the context of ISO 9001, from the price enquiry up to delivery to the client.

Control

Within its air conditioned metrology room, MPE has all of the means necessary to check its production - from a gauge block to three-dimensional measurement machine (TMM-CNC).

DESIGN OFFICE



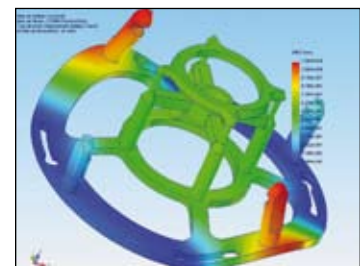
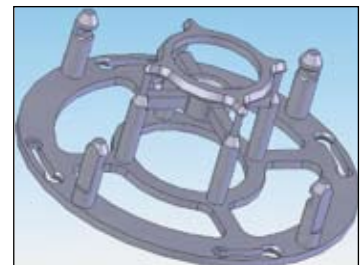
Authorisation as a contractor: Class 1-K2, Class 6 - Category K

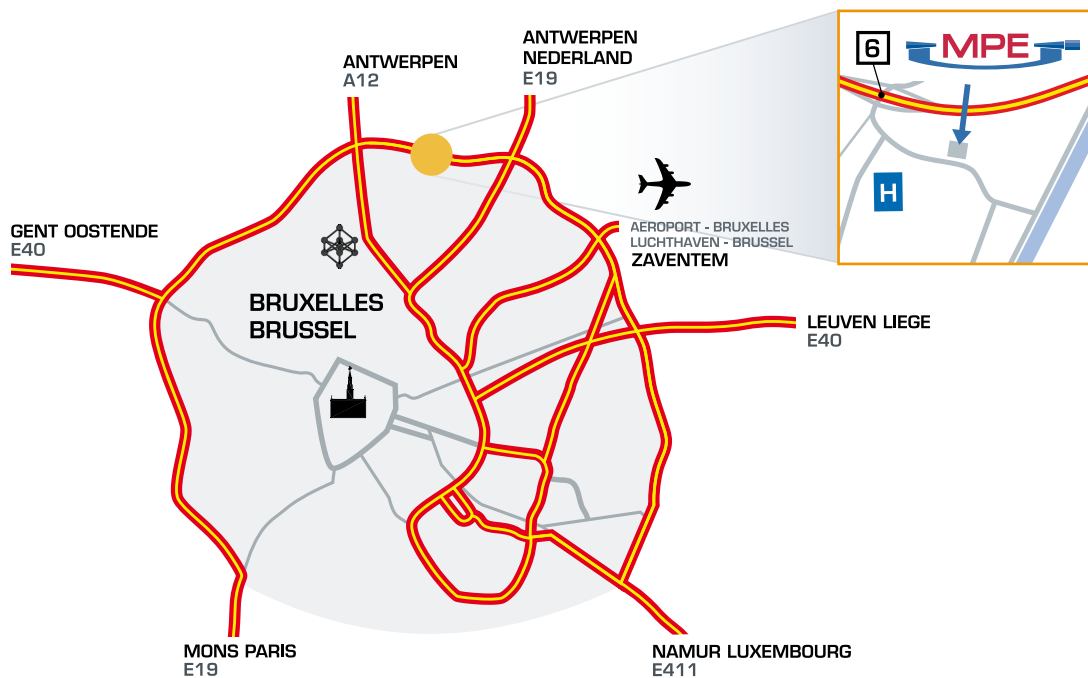
MPE: a constructive and dynamic partner

MPE gets involved to become an integral party in the development process.

Design of equipment and/or parts using versatile, high-performance software such as SolidWorks, AutoCAD, etc.

Finite element method (FEM) analysis in linear mode of the different components to validate the calculation notes for the manufacturer's file.





Ring Bruxelles Nord, sortie N°6 (Militair Ziekenhuis - Kanaalzone)



A member of the **BUTTING** Group

Mécanique de Précision pour Equipements

Avenue de Tyras 51 Tyraslaan - Bruxelles 1120 Brussel

+32(0)2 262 10 10 - +32(0)2 262 02 41

www.mpe.be - www.butting.de

